

LERA SOFT

R&S DUOMO DESIGN



Struttura: Testiera in legno multistrato avvolta con piuma d'oca selezionata e sterilizzata con un inserto di poliuretano. Base in alluminio completamente smontabile in due altezze: h. 27 cm - h. 40 cm. Piano letto a doghe di faggio con regolatori di rigidità o pianale ortopedico in multistrato di betulla verniciato nei colori della base. Testiera LERA SOFT con cuscino unico: Singolo Grande, Piazza e Mezza e Francese.

Rivestimento: Tessuto, eco-synthetic e pelle sfoderabile.

Cucitura: Liscia o pinzata

Finiture epossidiche base: Bianco, Sablé, Moka, Ardesia, Panna, Bronzo, Bronzo Anodico, Bronzo Safari, Oro Sabbia, Oro Ambra, Champagne, Grafite, Argento, Manganese.

Frame: Plywood headboard, upholstered with selected, sterilised goose down, with insert added polyurethane. Fully detachable aluminium base, available in two heights: 27 cm or 40 cm. Bed base with firmness-adjustable beech slats or orthopedic base in birch plywood, painted to match the colour of the structure.

LERA SOFT headboard with a single cushion: Max single bed, Queen size bed and Francese bed.

Covering: Fabric, eco-synthetic fabric and leather, removable.

Seams: Smooth or gathered

Base epoxy finish: White, Sablé, Moka, Ardesia, Panna, Bronze, Anodic Bronze, Safari Bronze, Oro Sabbia, Amber Gold, Champagne, Graphite, Silver, Manganese.

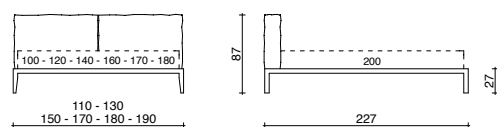


MATERASSI / MATTRESSES:

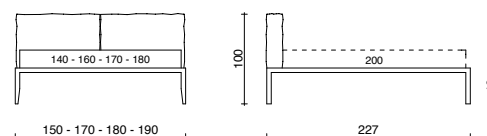
L. 100 - 120 - 140 - 160 - 170 - 180 P. 200 (Lera Soft)

L. 140 - 160 - 170 - 180 P. 200 (Lera Soft Alto)

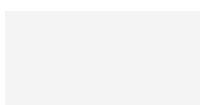
LERA SOFT



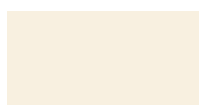
LERA SOFT ALTO



FINITURA BASE COLLEZIONE LERA - LERA COLLECTION BASE FINISH



BIANCO RAL 9003
WHITE RAL 9003



PANNA RAL 1013
PANNA RAL 1013



SABLÉ



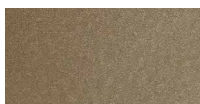
ORO SABBIA



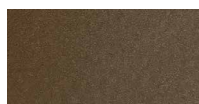
ORO AMBRA
AMBER GOLD



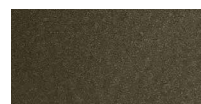
CHAMPAGNE



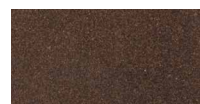
BRONZO SAFARI
SAFARI BRONZE



BRONZO ANODIC
ANODIC BRONZE



BRONZO
BRONZE



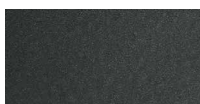
MOKA



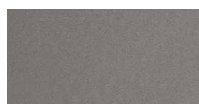
ARGENTO
SILVER



ARDESIA



MANGANESE



GRAFITE
GRAPHITE